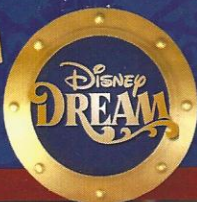


PERSONAL NAVIGATOR

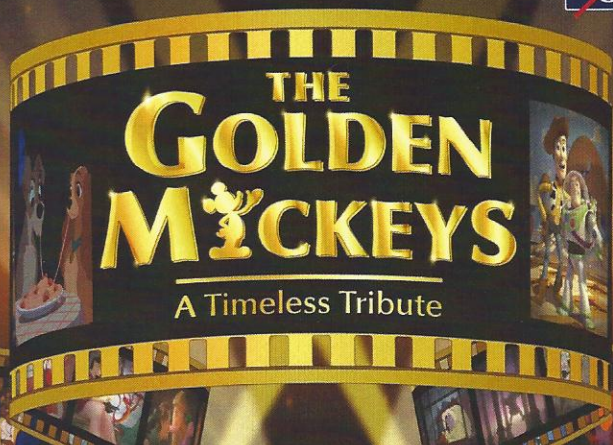


THURSDAY, DECEMBER 6, 2012

PORT CANAVERAL

Sunrise: 7:01 a.m. Sunset: 5:26 p.m.
Evening Attire: Cruise Casual
All Aboard: 3:45 p.m.

Thursday: Partly Sunny High: 71°F/22°C
Friday: Sunny High: 75°F/24°C



WALT DISNEY THEATRE
DECKS 3 & 4, FORWARD

6:15 P.M. & 8:30 P.M.

Assistance available at the entrance to the Walt Disney Theatre 30 minutes prior to show time.

Welcome Aboard!

Your Stateroom & Luggage

Staterooms will be ready at 1:30 p.m. Stateroom hosts will deliver luggage throughout the day until 5:30 p.m.

Staterooms with Bunk Beds

Bunk beds are recessed into the ceiling and will be prepared during evening turndown service by your Stateroom Host/ess.

Stateroom Safe

Each stateroom is equipped with a secured storage safe. Instructions for use are located on the safe.

To Change Dining Assignment

Requests for a different seating will be taken today:

- 1:00 - 3:30 p.m.; Book at Royal Palace
- 3:30 - 4:30 p.m.; Please call 7-1831, 7-1832, or 7-1833

Remy & Palo Bookings for Dinner

Bookings will be taken on a first come basis today at:

- 1:00 - 3:30 p.m., Palo; Book at Royal Palace
- 1:00 - 3:30 p.m., Remy; Book at Royal Palace

Reservations required & cover charge applicable. Please dial 7-9734, or 7-9735 for more information.

Dinner

- 5:45 p.m. - First seating
- 8:15 p.m. - Second seating

Please check your dining tickets for details of your dining rotation, and bring them to your specific dining location. There is no need to wait in line prior to dinner.

Dining Rooms open at designated seating times & your table is reserved each night of your cruise.

SAILING AWAY

It's time to go Sailing Away! Join Mickey and Minnie, along with Tinker Bell and the rest of the gang, as they welcome you aboard the Disney Dream.

4:30 p.m.
Deck Stage,
Deck 11, Midship

Don't Miss:

Welcome Aboard Ship Tour

Meet at Preludes, Deck 3, Forward - 1:00 & 2:00 p.m. Enjoy the beauty of the Disney Dream with your Cruise Staff in this guided tour.

King Triton's Tree Lighting Decree

Lobby Atrium, Deck 3, Midship - 7:30 p.m. Join the Royal Court and some of your Disney friends for this maritime tradition as we light our Christmas Tree.

Mirror, Mirror Game Show

D Lounge, Deck 4, Midship - 10:15 p.m. Join the Magic Mirror and Dopey in the fairest game show of them all, Mirror, Mirror. There's trivia, singing and even a relay race. Hi Ho, Hi Ho, its off to play we go!

Roadhouse

Evolution (18+), Deck 4, Aft - 11:15 p.m. Join your Club Host, David, and the Cruise Staff team, as they round up the greatest classic rock and urban country hits. With a special appearance by the Evolution Dancers.



GET THE PICTURE!

Visit Shutters today and ask your friendly Shutters staff about the GET THE PICTURE! Unlimited digital package which includes all your stateroom photos on one photo disc. For best value, upgrade to include all printed photos, too! Visit Shutters on Deck 4, Midship for more information. Don't wait until the last day. Beat the rush and order yours now! Terms and conditions apply.

DINNER MENU

Animator's Palate: Pacific Rim Cuisine
Enchanted Garden: Continental Market
Royal Palace: French Dinner

DRINK OF THE DAY

Paradise Cocktail (Alcoholic)
Espresso Chiller (Non Alcoholic)

IMPORTANT NUMBERS

Fire/Security: 7-3001
Medical Emergency: 7-3000
Health Center: 7-1923

FAMILY ACTIVITY HIGHLIGHTS

SALUDOS AMIGOS FIESTA

D Lounge, Deck 4, Midship - 10:45 p.m.

Hola Amigos! Consider this your exclusive invitation to a Latin dance party, that has all the trimmings of a proper fiesta. Learn to Salsa, Merengue and have a Latin good time, just don't tell Donald about the party - it's a surprise!

FAMILY SUPERSTAR KARAOKE

D Lounge, Deck 4, Midship - 11:15 p.m.

Join your Cruise Staff in D Lounge tonight and sing along to your favorite song - fun for everyone.

Cruise Highlights

Thursday

PORT CANAVERAL
All Aboard: 3:45 p.m.
Attire: Cruise Casual

THE GOLDEN MICKEYS
Walt Disney Theatre
6:15 & 8:30 p.m.

Friday

NASSAU
All Ashore: 9:45 a.m.
All Aboard: 6:00 p.m.
Attire: Pirate/Cruise Casual

VILLAINS TONIGHT!
Walt Disney Theatre
6:15 & 8:30 p.m.

Saturday

CASTAWAY CAY
All Ashore: 8:30 a.m.
All Aboard: 5:00 p.m.
Attire: Optional Dress Up

DISNEY'S BELIEVE
Walt Disney Theatre
6:15 & 8:30 p.m.

Subject to change.

ADULT ACTIVITY HIGHLIGHTS

FITNESS CLASSES



Senses Spa and Salon has a variety of seminars and fitness classes available throughout the cruise.

Spa Tours - Senses Spa & Salon, 12:00 p.m. - 4:00 p.m.

Spa Raffle - Senses Spa & Salon, 3:00 p.m.

BEVERAGE SEMINARS

Your Beverage team has a host of tastings and seminars to entertain and educate you. Stop by District Lounge, Deck 4, Aft between 12:00 p.m. and 3:30 p.m. to pre-book these experiences. Nominal fees apply.

Whiskey Tasting - Meridian - 10:30 p.m.

LIVE MUSIC WITH ENHARMONIQ

District Lounge, Deck 4, Aft - 7:30, 9:30, 10:30 & 11:15 p.m.

Join our Musical Trio, EnharmoniQ, as they play live in District Lounge for your listening pleasure.

CLUB
18*21

CLUB 18*21 ICE BREAKERS

Evolution, Deck 4, Aft - 10:00 p.m.

Club 18*21 is an exclusive gathering for young adult Guests. Come meet fellow cruisers and learn about the great activities the Disney Dream has to offer to help create the perfect cruise experience.



ROADHOUSE FOLLOWED BY EVOLUTION NIGHTCLUB WITH GUEST DJ CHRISTIAN GAMA

Evolution, Deck 4, Aft - 11:15 p.m.

Join your Club Host, David, and the Cruise Staff team, as they round up the greatest classic rock and urban country hits. With a special appearance by the Evolution Dancers.



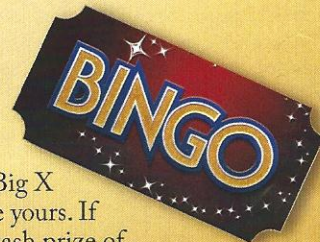
DIAMOND BINGO

D Lounge, Deck 4, Midship

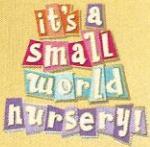
Card Sales - 7:30 p.m.

Game Starts - 7:45 p.m.

Join us for cash prizes and your chance to win a Diamond heart shaped necklace courtesy of your shopping guides, Vlad & Summer. Complete the Big X in 20 numbers or less, and \$500 could be yours. If not we continue to play for the highest cash prize of the session!



YOUTH ACTIVITIES HIGHLIGHTS



Deck 5 Midship (7-5864) 5:30 p.m. - 1:00 a.m.
 Infants and Toddlers can enjoy toys and activities at It's A Small World Nursery. Reservations are first come, first served so please stop by!



Deck 5, Midship (7-1440)
6:45 p.m. - 12:00 Mid



Deck 5, Midship (7-1445)
5:30 p.m. - 1:00 a.m.

REGISTRATION FOR 3-12 YEAR OLDS

Meet the Youth Activities Team in the Oceaneer Lab and Oceaneer Club, complete your registration & learn all about the Themed Experiences this cruise!

CLUBHOUSE SERIES - The Clubhouse Themed Experiences focus on movement and feature content which appeals to younger children. *Recommended 7 yrs & younger.*

STORYBOOK SERIES - The Storybook Series Themed Experiences are designed with a strong connection to the Disney classic stories. *Recommended 7 yrs & younger.*

JUMP UP! SERIES - The Let's Move! Themed Experiences will include large ground games & movement-oriented activities.

CREATE & INVENT SERIES - The Create & Invent Themed Experiences will have a tactile focus allowing children to create and admire their work.

IN THE SPOTLIGHT SERIES - The In The Spotlight Themed Experiences focus on children's stage presence with lots of activities and enthusiasm. *Recommended 7 yrs & older.*

SOLVE IT! SERIES - The Solve It! Themed Experiences are less active, but will challenge children with problem/solutions-based activities. *Recommended 7 yrs & older.*

YOUTH ACTIVITIES OPEN HOUSE - Activities for families, adults and children of all ages to enjoy together.

DINE & PLAY

A convenience for families dining at 8:15 p.m. Our Youth Activities Counselors will be available at 9:15 p.m. at the entrance of Royal Palace, Enchanted Garden and Animator's Palate dining rooms to bring registered children to join the fun in the Youth Activity areas.

YOUTH ACTIVITIES OPEN HOUSE

Open House is an opportunity for all to come and participate in a variety of exciting activities and free time in the Oceaneer Club, Lab, Edge and Vibe throughout the cruise. During these times secured programming will still be offered in the other venue for those looking to check their children into care.



Deck 13 Midship (7-9743) - 6:00 p.m. - 1:00 a.m.

EDGE (11- 14 YEAR OLDS)

Edge is an interactive play space: play video games, watch television and participate in arts and crafts with kids their own age.

TAKING IT TO THE EDGE

10:00 p.m. Edge

Come and meet your counselors and fellow tweens as we get to know each other and what there is for you to do all week long in Edge.



Entrance on Deck 4 Forward (7- 9417)
6:00 p.m. - 1:00 a.m.

THE DOWNLOAD (14-17 YEAR OLDS)

10:30 p.m. Vibe

Come up to Vibe and help plan all the fun activities you will be doing this cruise with your new friends! We'll use our very own Teens-only intranet database to decide how our week will go!

BUENA VISTA THEATRE

Feature Movies this Voyage

THURSDAY - PORT CANAVERAL

5:30 p.m. PG The Odd Life of Timothy Green
 8:15 p.m. PG The Odd Life of Timothy Green
 10:30 p.m. PG Wreck It Ralph **DOLBY 3D**

FRIDAY - NASSAU

10:15 a.m. PG Frankenweenie **DOLBY 3D**
 12:15 p.m. PG The Odd Life of Timothy Green **cc**
 2:30 p.m. PG-13 Lincoln
 5:30 p.m. PG Brave **DOLBY 3D**
 8:15 p.m. PG Brave **DOLBY 3D**
 11:00 p.m. PG-13 Lincoln

SATURDAY - CASTAWAY CAY

8:30 a.m. PG Wreck It Ralph- 2D Version **cc**
 12:00 p.m. PG Wreck It Ralph- 2D Version
 2:30 p.m. PG-13 Lincoln **cc**
 5:45 p.m. PG Frankenweenie **DOLBY 3D**
 8:30 p.m. PG Frankenweenie **DOLBY 3D**
 10:30 p.m. PG-13 Lincoln

WALT DISNEY THEATRE

FRIDAY - NASSAU

2:00 p.m. PG Wreck-It Ralph **DOLBY 3D**
 11:00 p.m. PG Wreck It Ralph- 2D Version

SATURDAY - CASTAWAY CAY

10:45 p.m. PG Wreck-It Ralph **DOLBY 3D**

Subject to change.



Join the Magic Mirror and Dopey in the fairest game show of them all, Mirror, Mirror. There's trivia, singing and even a relay race. Hi Ho, Hi Ho, its off to play we go!

D Lounge,
Deck 4, Midship
10:15 p.m.



GAME SHOW

It's time to play everyone's favorite couples game show Match Your Mate!

Evolution (18+),
Deck 4, Aft
10:30 p.m.

MORE TO ENJOY WHILE ONBOARD

PLAN YOUR NEXT CRUISE

Book a future cruise today and you'll save 10%, receive up to a \$200 onboard credit, and pay a reduced deposit! Tune to Channel 8 on your stateroom TV for details and visit the Future Cruise Sales Desk, Deck 4, Midship.

DISNEY VACATION CLUB® MEMBER CELEBRATION

Members! Mix and mingle with other Members and learn how you can enhance your Membership! Please see a *Disney Vacation Club* representative on Deck 4, Midship, or call 7-2805 from your stateroom phone for more information.

PORT & SHOPPING SHOW - 2:45 P.M. BUENA VISTA THEATRE

Fun, informative and interactive, with crucial information to help you enjoy every moment in Nassau. This talk is a must for all guests. Free Jewelry, gemstones & color changing gifts for all who attend as well as a savings coupon book and a raffle for a Tanzanite slide and matching omega. This talk will ensure you know all the insider tips & secrets to getting the best deals in Nassau.



BEVERAGE SEMINARS AT SEA

Indulge in the world of beverage! Our beverage team is sharing all their secrets about your favorite drinks. Please visit District Lounge between 12:00 p.m. and 3:30 p.m. to secure your spot. Tasting seminars are for Guests 21 and over. Limited availability.

THREE-NIGHT WINE PACKAGES: THE CLASSIC WINE PACKAGE & THE PREMIUM WINE PACKAGE

These three-night packages entitle you to select fine wines from our specially designed wine list with up to 25% savings over regular prices. Your dining server will provide more details.

VALUE WATER PACKAGES

Purchase 24 chilled bottles of Evian water and save over regular prices. For delivery, dial Room Service from your stateroom telephone.

GINGERBREAD HOUSE MAKING

Join your Cruise Staff and our Pastry Chef as you create your own Gingerbread House.

Limited availability, visit Guest Services to sign-up!



RAINFOREST DELUXE CRUISE PASS

Enjoy our scented showers, aroma steam, sauna rooms and private jacuzzi overlooking the ocean. Also, read a nice book on the warm loungers! Unlimited entry when you purchase your cruise pass today!

Couples \$102.00 and Singles \$69.00
Limited number of passes on sale!

*Senses Spa & Salon, Deck 11, Forward
Ext. 7-1465*

TAG HEUER TIMEPIECES ON THE DREAM

Since 1860 TAG has been synonymous with timepieces of perfection. From Formula 1 to Carrera and Link, there is a style just waiting for you.

Pull your style together with a sophisticated, business savvy or sport active look whichever you choose TAG Heuer represents it best. Great Tax and Duty free savings to enjoy.

WHITECAPS

Deck 3, Forward



SAY CHEESE!

Professional Portraits, Lobby Atrium, Deck 3, Midship.

Lifestyle - Six Guests maximum

7:15 - 8:30 p.m. & 9:30 - 10:30 p.m.

Larger Groups - Please contact the Shutters team on Deck 4 for an appointment

**Please note that photos are available for viewing on our interactive photo kiosks approximately five hours after being taken and are only available for purchase during this cruise.*



From a visit to the world-renowned Atlantis Resort in Nassau to Parasailing high above the turquoise waters around Castaway Cay, there is an adventure for everyone on your Disney Dream cruise. Visit the friendly team at the Port Adventures Desk, Deck 5, Midship, to learn more about these, and many more Port Adventures.

Port Adventures Desk, Deck 5, Midship

SHOPPING

IMPORTANT NOTICE FOR NASSAU

Please note that it is important to get all of your shipboard, poolside, and island essentials this evening as tomorrow our merchandise locations will not open until 7:00 p.m. Due to port regulations, our shops are only allowed to open after we have left the port, so please consider your needs for tomorrow, today.

DISCOVER THE VISTA GALLERY SILENT AUCTION

Come place your bid on exquisite pieces of some of your favorite Disney characters! Bidding closes at 6:00 p.m. on the final night of the cruise. Also available, come see Disney/Pixar movie artwork, including our newest collection for Brave. Celebrate holidays with the new Mickey Santa figurine by Britto. Discounted shipping available on two or more pieces of art. Vista Gallery, Deck 4, Midship.

IT IS TIME

Be on time for all of the events onboard with a new designer watch. Experience the best from Marc Jacobs, Michael Kors, Citizen, Michele, and TAG. Be sure to see our Disney line of watches available for a little extra magic that you can wear home. White Caps, Deck 3, Forward.

HOLIDAY CELEBRATIONS

Come see our newly arrived holiday season merchandise! Ornaments, stockings, hats, and more. Everything you need to get into the festive season with Mickey and Minnie and all their friends, including our Disney Princesses. Start the season right at Mickey's Mainsail, Deck 3, Forward.

ROYAL INVITATION

Hear ye, hear ye. By royal decree, all princesses are cordially invited to attend the Disney Dream Princess Gathering tomorrow. Should your mice or fairy godmother be unavailable, Mickey's Mainsail has everything you will need to arrive in style - gowns and shoes, tiaras and wigs, wands and jewelry, autograph books and pens. Your little princess will feel like royalty. Mickey's Mainsail, Deck 3, Forward.

SHOPPING ONBOARD

Tax and duty free shopping right here onboard. A great range of jewelry, fragrances and liquor all at competitive prices is available. Buy onboard and we will package it safely for your journey home. White Caps, Deck 3, Forward.

Due to port regulations, when the ship is docked, the stores will remain closed.

IMPORTANT INFORMATION

Security Notice

All Guests (including children) who wish to disembark the ship are required to present their Key to the World card at the gangway. A photo ID is also required for those Guests who are 18 years of age or older. Guests under the age of 18 are required to have a Parent, Guardian or other responsible adult sign an authorization form at the time it is given out if they wish to go ashore unaccompanied. Authorization forms are available at the gangways and Guest Services.

Cold and Flu Reminder

Please wash hands frequently and thoroughly, particularly before meals. Contact the Health Center by dialing 7-1923, should anyone in your party become ill.

Corridor Quiet Hours

As a courtesy to all our Guests, please recognize quiet hallway hours from 10:30 p.m. til 8:00 a.m.

Inclement Weather

For the safety of all Guests, outdoor events may be changed due to unforeseen weather conditions.

Environmental Message

With Disney's commitment to the Environment, please refrain from throwing anything over the Ship's side. Thank you!

No Reserved Seats Policy

As a courtesy to all our Guests, we kindly advise that the saving of seats is not permitted in the Walt Disney Theatre, and the saving of the sun loungers is not permitted on Deck 11, 12 and 13. Items left unattended will be returned to lost and found at Guest Services, Deck 3 Midship.

Smoking

For the comfort of our guests the following areas are designated as Smoking areas:

- Deck 13, Forward, port side, by "Currents"
- Deck 12, Aft, port side outdoor area that is accessible through the Meridian Lounge
- Deck 4, Aft, port side from 6:00 p.m. to 6:00 a.m. only (all of Deck 4 is no smoking from 6:00 a.m. to 6:00 p.m.)

- Smoking is permitted on stateroom verandahs.

Smoking is prohibited inside all guest staterooms. Guests found smoking in their staterooms will be charged a \$250 stateroom recovery fee.

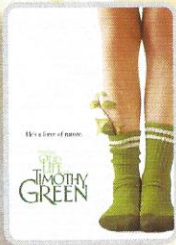
Walt Disney Theatre

Theatrical performances may use artificial fog, strobe lights, pyrotechnics and other special effects. For the safety of our performers and the comfort of those around you, the use of any photography, video recording devices or any electronic equipment is prohibited.

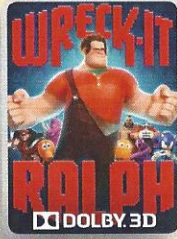
Verandah Safety

Please do not leave any combustible materials on your balcony when not present in your stateroom for safety reasons.

BUENA VISTA THEATRE



5:30 & 8:15 p.m.
Run Time: 1 hr 49 min
Rating: PG



10:30 p.m.
Run Time: 1 hr 51 min
Rating: PG

Character Appearances

DONALD DUCK

Deck 4, Balcony
12:00 p.m. & 1:00 p.m.
Lobby Atrium - 9:30 p.m.

PLUTO

Deck 4, Balcony
12:30 p.m. & 1:30 p.m.
Lobby Atrium - 10:30 p.m.

SNOW WHITE

Lobby Atrium - 5:30 p.m.

MICKEY MOUSE

Deck 4, Balcony - 5:15 p.m.,
7:45 p.m. & 9:45 p.m.

PRINCESS TIANA

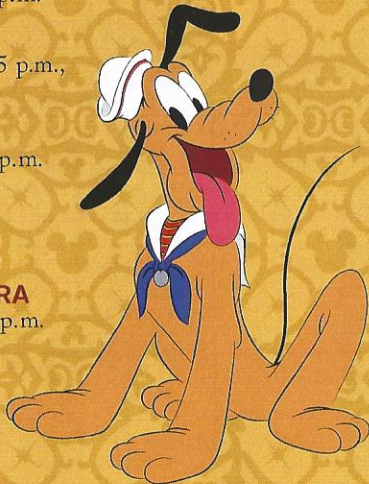
Lobby Atrium - 7:00 p.m.

MINNIE MOUSE

Lobby Atrium
7:45 p.m. & 9:45 p.m.

PRINCESS AURORA

Lobby Atrium - 7:45 p.m.



For details of daily Disney character appearances, refer to the character line on your Navigator Grid, or the digital character board in the Lobby Atrium.

YOUTH ACTIVITIES THEMED EXPERIENCES

CLUBHOUSE SERIES focuses on movement and features content which appeals to younger children.

JUMP UP! SERIES includes large ground games & movement-oriented activities.

IN THE SPOTLIGHT SERIES focuses on children's stage presence with lots of activities and enthusiasm.

STORYBOOK SERIES is designed with a strong connection to the Disney classic stories.

CREATE & INVENT SERIES will have a tactile focus allowing children to create and admire their work.

SOLVE IT! SERIES are less active, but will challenge children with problem/solutions-based activities.

OPEN HOUSE

are activities for families, adults and children of all ages to enjoy together.

SHIP DIRECTORY

YOUTH ACTIVITIES

DISNEY'S OCEANEER CLUB	DECK 5, MID	6:45 P.M. - 12:00 A.M.
DISNEY'S OCEANEER LAB	DECK 5, MID	5:30 P.M. - 1:00 A.M.
EDGE	DECK 13, MID	6:00 P.M. - 1:00 A.M.
VIBE	DECK 4, FWD	6:00 P.M. - 1:00 A.M.
IT'S A SMALL WORLD NURSERY	DECK 5, MID	5:30 P.M. - 1:00 A.M.

RECREATION

AQUADUCK	DECK 12, MID	12:00 P.M. - 3:00 P.M. 4:30 P.M. - 11:00 P.M.
GOOFY'S SPORTS DECK	DECK 13, AFT	12:00 P.M. - 6:00 P.M. REOPENS AT 11:30 P.M.
DONALD'S POOL	DECK 11, MID	11:45 A.M. - 3:30 P.M. 5:30 P.M. - 11:30 P.M.
GOLF/SPORTS SIMULATORS	DECK 13, AFT	12:30 P.M. - 3:30 P.M. 4:30 P.M. - 6:00 P.M.
GOOFY & MAX'S MINI GOLF	DECK 13, AFT	12:00 P.M. - 10:00 P.M.
MICKEY'S POOL	DECK 11, MID	11:45 A.M. - 12:00 MID. 4:30 P.M. - 6:00 P.M.
MICKEY'S SLIDE	DECK 11, MID	12:30 P.M. - 3:30 P.M. 4:30 P.M. - 6:00 P.M.
MIDSHIP DETECTIVE AGENCY	DECK 5, MID	12:00 P.M. - 11:00 P.M.
NEMO'S REEF	DECK 11, MID	12:00 P.M. - 3:30 P.M. 4:30 P.M. - 6:00 P.M.
PORT ADVENTURES DESK	DECK 5, MID	12:00 P.M. - 3:30 P.M. 4:30 P.M. - 6:00 P.M. 7:00 P.M. - 10:00 P.M.
QUIET COVE POOL	DECK 11, FWD	12:00 P.M. - 12:00 MID.
SENSES FITNESS CENTER	DECK 11, FWD	12:00 P.M. - 10:00 P.M.

GENERAL INFORMATION

ARR-CADE	DECK 11, AFT	24 HOURS
DISNEY VACATION CLUB	DECK 4, MID	5:00 P.M. - 10:00 P.M.
FUTURE CRUISE DESK	DECK 4, MID	7:00 P.M. - 9:00 P.M.
GUEST SERVICES	DECK 3, MID	24 HOURS
HAIRBRAIDING	DECK 11, MID	4:30 P.M. - 10:00 P.M.
HEALTH CENTER	DECK 1, FWD	4:30 P.M. - 7:00 P.M.
PORT & SHOPPING DESK	DECK 4, MID	6:00 P.M. - 9:00 P.M.
PRELUDES	DECK 3, FWD	5:45 P.M. - 6:30 P.M. 8:00 P.M. - 8:45 P.M.
SENSES SPA AND SALON	DECK 11, FWD	12:00 P.M. - 10:00 P.M.
SHUTTERS PHOTO GALLERY	DECK 4, MID	7:00 P.M. - 11:00 P.M.

SHOPPING

MICKEY'S MAINSAIL	DECK 3, FWD	6:00 P.M. - 10:45 P.M.
SEA TREASURES	DECK 3, FWD	6:00 P.M. - 10:45 P.M.
VISTA GALLERY	DECK 4, MID	6:00 P.M. - 10:45 P.M.
WHITE CAPS	DECK 3, FWD	6:00 P.M. - 10:45 P.M.
WHOZITS & WHATZITS	DECK 11, MID	6:15 P.M. - 10:00 P.M.

DINNER MENU

Animator's Palate: Pacific Rim Cuisine
Enchanted Garden: Continental Market
Royal Palace: French Dinner
Dining Times: 5:45 p.m. & 8:15 p.m.

DRINK OF THE DAY

Paradise Cocktail (Alcoholic)
Espresso Chiller (Non Alcoholic)

WEATHER FORECAST

Thursday: Partly Sunny
High: 71°F/22°C
Friday: Sunny
High: 75°F/24°C

Evening Attire: Cruise Casual

DINING & LOUNGES

LUNCH

CABANAS FOOD COURT (PORT SIDE)	DECK 11, AFT	11:30 A.M. - 3:15 P.M.
CABANAS FOOD COURT (STARBOARD)	DECK 11, AFT	12:00 P.M. - 3:00 P.M.
ENCHANTED GARDEN	DECK 2, MID	12:15 P.M. - 2:00 P.M.
FILMORE'S FAVORITES	DECK 11, MID	12:00 P.M. - 7:00 P.M.
LUIGI'S PIZZA	DECK 11, MID	12:00 P.M. - 6:00 P.M.
TOW MATER'S GRILL	DECK 11, MID	12:00 P.M. - 6:00 P.M.

DINNER

ANIMATOR'S PALATE	DECK 3, AFT	5:45 P.M. & 8:15 P.M.
ENCHANTED GARDEN	DECK 2, MID	5:45 P.M. & 8:15 P.M.
ROYAL PALACE	DECK 3, MID	5:45 P.M. & 8:15 P.M.
TOW MATER'S GRILL	DECK 11, MID	6:00 P.M. - 11:00 P.M.
PALO & REMY (18+)	DECK 12, AFT	6:00 P.M. - 9:00 P.M.

(RESERVATION REQUIRED & COVER CHARGE APPLICABLE. DIAL #7-9734)

LATE NIGHT SNACKS

LUIGI'S PIZZA	DECK 11, MID	9:30 P.M. - 12:00 MID.
THE DISTRICT	DECK 4, AFT	10:45 P.M. - 11:45 P.M.

ADDED FEATURES

BEVERAGE STATION	DECK 11, AFT	24 HOURS
EYE SCREAM	DECK 11, MID	12:00 P.M. - 12:00 MID.
ROOM SERVICE	DIAL 0	24 HOURS

ENTERTAINMENT - LOUNGES - BARS

Adults must be 21 and older to consume alcoholic beverages.

687 PUB	DECK 4, AFT	12:00 P.M. - 9:00 P.M.
687 PUB (18+)	DECK 4, AFT	9:00 P.M. - 12:00 MID.
BON VOYAGE	DECK 3, MID	11:30 A.M. - 11:00 P.M.
COVE BAR (18+)	DECK 11, FWD	12:00 P.M. - 11:00 P.M.
COVE CAFE (18+)	DECK 11, FWD	6:30 A.M. - 6:00 P.M.
COVE CAFE WINE BAR (18+)	DECK 11, FWD	6:00 P.M. - 12:00 MID.
CURRENTS	DECK 13, FWD	12:00 P.M. - 11:00 P.M.
D LOUNGE	DECK 4, MID	SHOWTIMES
DISTRICT LOUNGE	DECK 4, AFT	12:00 P.M. - 9:00 P.M.
DISTRICT LOUNGE (18+)	DECK 4, AFT	9:00 P.M. - 12:00 MID.
EVOLUTION (18+)	DECK 4, AFT	10:00 P.M. - 2:00 A.M.
FROZONE TREATS	DECK 11, MID	11:30 A.M. - 11:00 P.M.
MERIDIAN (18+)	DECK 12, AFT	5:00 P.M. - 12:30 A.M.
OUTLOOK	DECK 14, MID	SUNSET TIMES
PINK (18+)	DECK 4, AFT	5:00 P.M. - 12:30 A.M.
SKYLINE (18+)	DECK 4, AFT	5:00 P.M. - 12:00 MID.
VISTA CAFE	DECK 4, MID	12:00 P.M. - 11:00 P.M.
WAVES	DECK 12, AFT	12:00 P.M. - 7:00 P.M.

Consumers who order raw or partially cooked, ready-to-eat food of animal origin, are hereby informed that the food is not sufficiently cooked to ensure its safety.

GOOFY'S SPORTS

Digital Simulators

Sports Simulator

(Basketball, Baseball, Hockey, or Soccer)

\$12 / half hr, \$20 / hr

Golf Simulator

\$25 / half hr, \$45 / hr

Reservations can be made at the Port Adventures Desk, Deck 5, Midship or at the Simulators, Deck 13, Aft